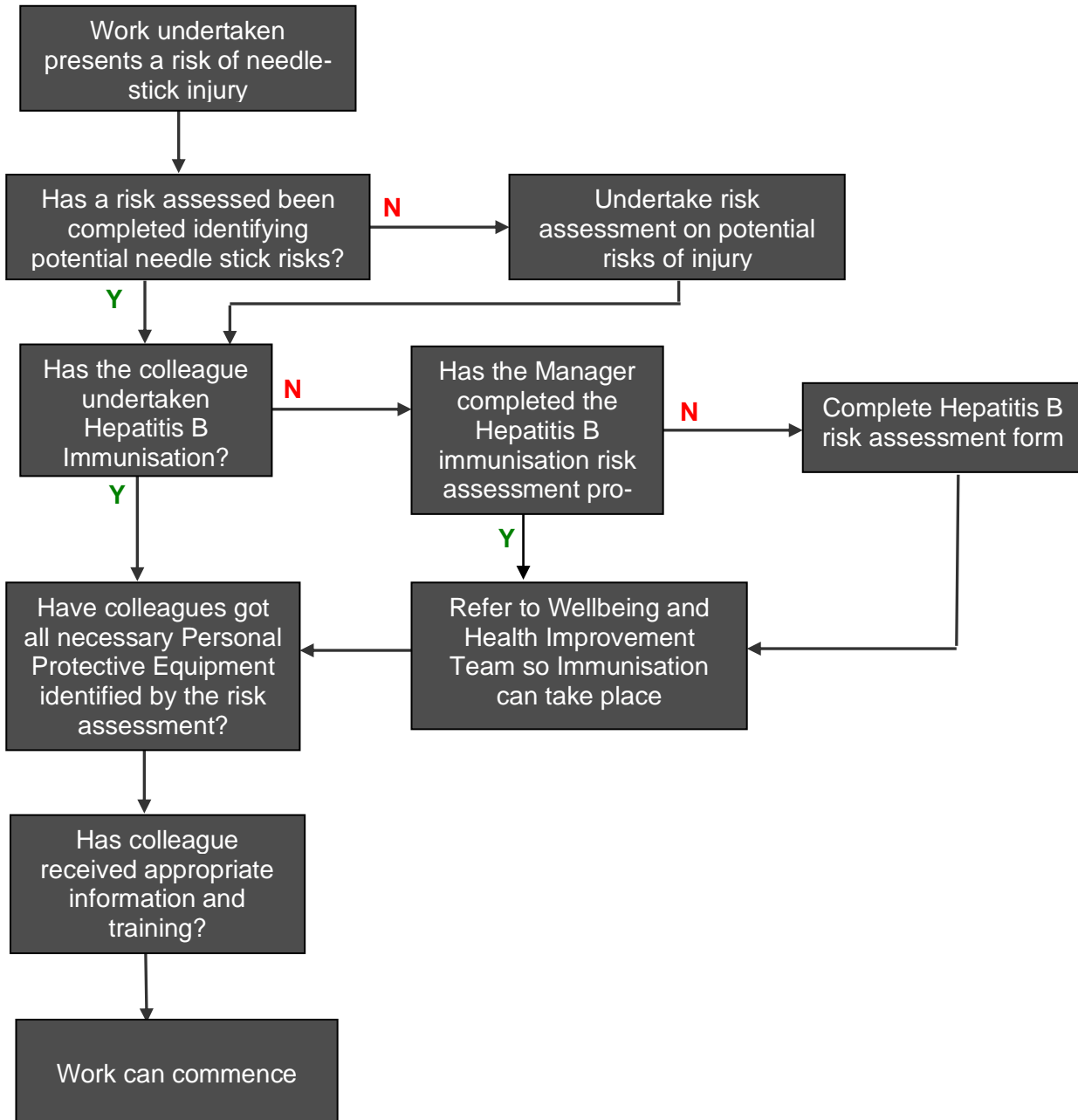


Needle-stick Flow Charts

To assist managers, there are 2 flow charts that may assist in the management of infection control and needle-stick management.

Work with the potential to come into contact with a needle

Where a colleague commences work and the potential for coming into contact with needles is present, the following flow chart should be followed.



Action following a Needle stick Incident

The actions on the following flow chart identify what must be implemented following a needle-stick injury to a colleague.

