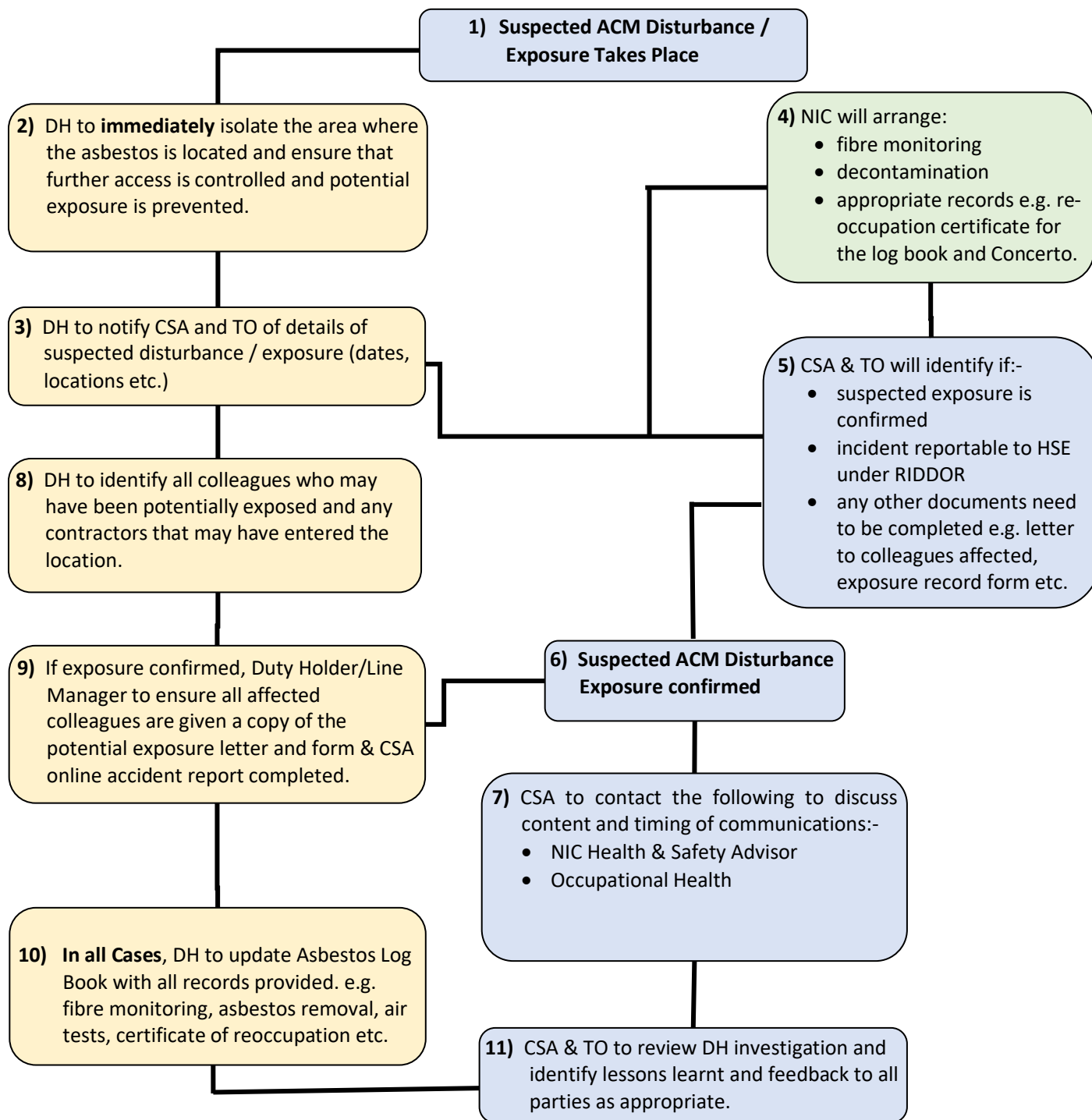


Nottingham City Council Suspected Asbestos Containing Material Disturbance / Exposure Process



Nottingham
City Council

The following process needs to be implemented whenever a colleague of National Ice Centre has been potentially exposed to asbestos.



Definitions

- The **Duty Holder (DH)** is considered to be the Property Manager/Head Teacher and Asbestos Log Book holder for the purposes of asbestos management.
- The DH may not always be the line manager of the colleague(s) potentially exposed e.g. for shared premises.
- Where works are being carried out on behalf of the Duty Holder, the above responsibilities will need to be undertaken by the most appropriate person(s) in accordance with the project procedures/contract.

Manager Action

Corporate Safety Advice Action (CSA)

NIC Health & Safety Advisor